	VENDOR LABELING SPECIFICATION	TF-SC-SPEC-1	
		Revision	0
		Revision Date	11/13/24

1. Purpose

1.1. The specification provides the instructions and guidelines for labeling products shipped to Titan Fittings.

2. Scope

- 2.1. This applies to individual packing and mixed box packaging.
- 2.2. This does not apply to crates or other shipping type containers.

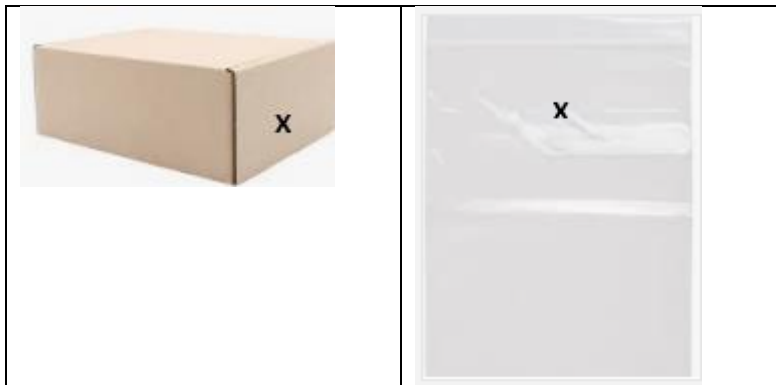
3. Individual Package

3.1. Label Stock

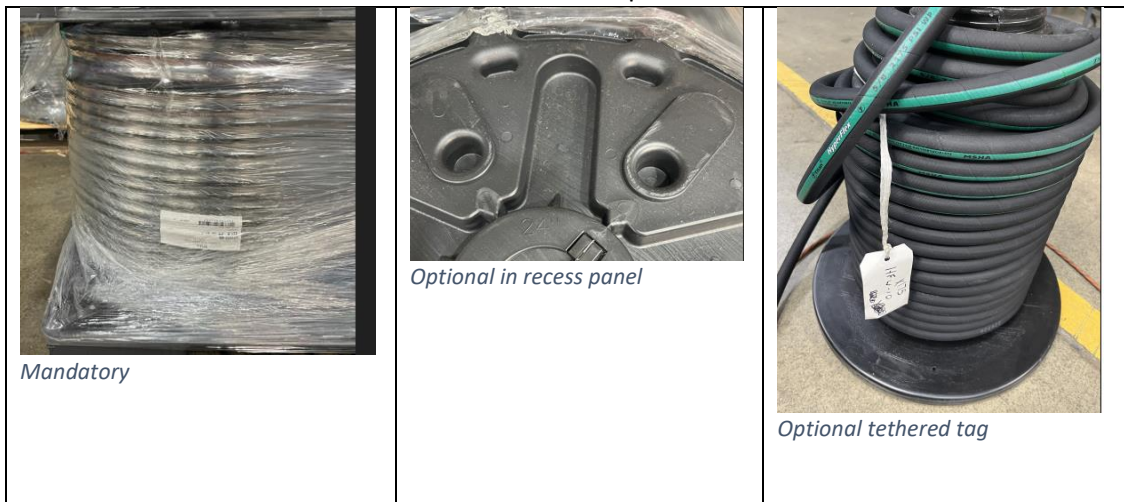
- 3.1.1. Minimum size 2.3" x 4"
- 3.1.2. Bright White

3.2. Label Location

3.2.1. Locate Box and Bag label on the side panel indicated by the "X" for boxes and bags as shown below.



3.2.2. Hose reels must be on exterior diameter with two optional locations for a second label.



 TITAN ®	VENDOR LABELING SPECIFICATION	TF-SC-SPEC-1	
		Revision	0
		Revision Date	11/13/24

3.3. Label Content

3.3.1.Mandatory

- Titan Fitting Part number: Text as displayed on the Titan Fitting purchase order to include dashes and special characters.
- Titan Fitting Part number: 3-9 bar code font as displayed on the Titan Fitting purchase order to include dashes and special characters.
- Quantity: text in box/bag. If qty is <10, include a 0. le 08
- Quantity: 3-9 bar code font. If qty is <10, include a 0. le 08
- Lot and/or Titan PO number used for traceability
- **Vendor Name: Lower left corner of the label**
- **Date of printing**

3.3.2.Optional

- Country of Origin (COO)– located in the bottom right corner of the label.
- Manufacturer part number
- Description
- Serial number

3.3.3.Example

- The layout and location of printed information is the discretion of the manufacturer. Questions or samples may be submitted to Titan Fitting Procurement for feedback.
- **The bottom row of the label is reserved for the Vendor and Country of Origin only.**



3.4. Label Quality

3.4.1.Bar code quality must be a grade C or better in accordance with ISO 15416.

4. Mixed exterior box having more than one part number

	VENDOR LABELING SPECIFICATION	TF-SC-SPEC-1	
		Revision	0
		Revision Date	11/13/24

- 4.1. A mixed box having more than one part number is allowed if the individual package inside the exterior box is labeled in accordance with section 3.
- 4.2. The exterior of the box must include labels or other printed information that describes the content and contain:
 - Titan Fitting Part number as displayed on the Titan Fitting purchase order to include dashes and special characters.
 - Quantity text in box
 - Lot or PO number used for traceability
5. Miscellaneous
 - 5.1. Additional labels may be applied if needed by the manufacturer.